

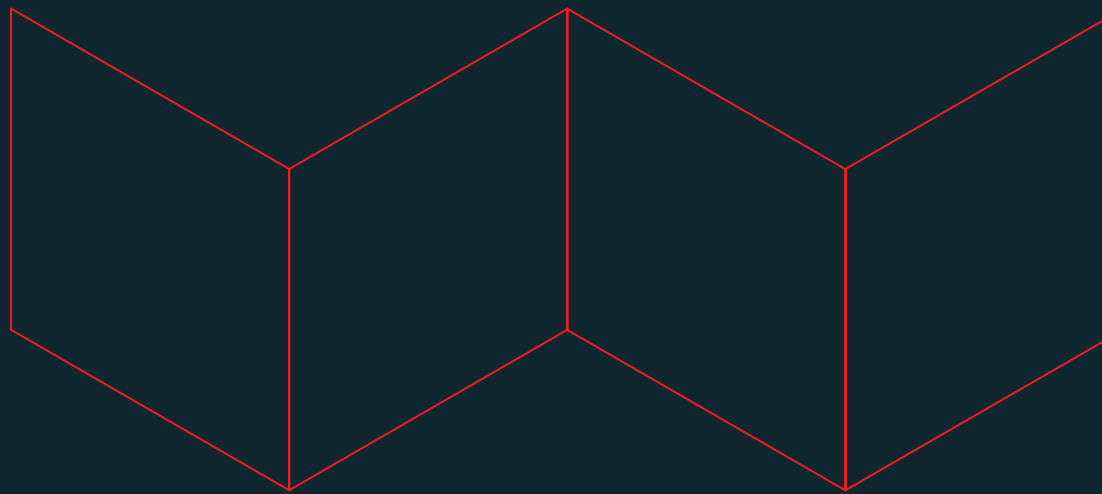


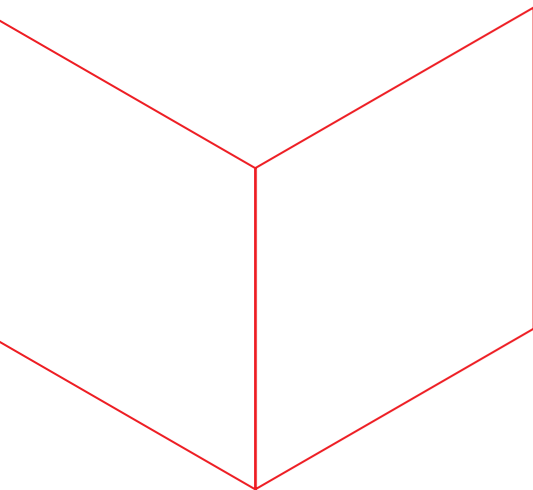
# Safety fence system Easy FLEX II

The flexible safety fence system  
for dividing protection equipment



*First in safety*





## Safety fence system Easy FLEX II

according machinery directive 2006/42/EG,  
DIN EN ISO 12100, DIN EN ISO 13857,  
DIN EN ISO 14120 und DIN EN ISO 14119

The safety fence system FLEX II is a stable separating protective facility made of standard grid elements and posts that are compatible with all Brühl door products. The modular concept permits an optimal adjustment to the different operational situations and can be shortened individually on site. The safety fence system FLEX II thus ensures maximum safety.



# Product advantages safety fence system Easy FLEX II

**Slanted fence fields**  
e.g. for conveyor entrances and outlets  
➔ EN ISO 14120; 5.3.2/5.3.7

**Captivity of the fasteners**  
Tabs remain with screws on the grid mat  
➔ EN ISO 14120; 5.19/5.4.4/5.3.8

**High stability with low weight**  
Grid elements consist of wires and flat bars  
➔ EN ISO 14120; 5.2.5.2/5.4.3

**High flatness, optimal process view**  
by frameless design with a slot-shaped opening of 20 x 200 mm  
➔ EN ISO 14120; 5.2.2/5.2.4/5.9

**Distance only with tools**  
The fastening material can only be removed with the aid of a tool  
➔ EN ISO 14120; 5.3.9/8.5

**Integrated height compensation**  
pero field +6/-1 mm  
➔ EN ISO 14120; 5.2.2

**Flexible angle position**  
Fence profile can be mounted in any angle (oval fence planning possible)  
➔ EN ISO 14120; 5.1.3/5.4.2

**Robust post profile strength**  
of at least 2,0 mm  
➔ EN ISO 14120; 5.1.3/5.4.2

**Flow-moulded threads**  
for safe attachment of the elements  
➔ EN ISO 14120; 5.3.8/5.4.4

**Flexible adjustment**  
Elements can be placed next to or on top of each other (e.g. sections, diagonals, frames, separating points possible)  
➔ EN ISO 14120; 5.2.1/5.3.1/5.3.7

**Maximum impact resistance of the paint structure**  
by sandblasted and powder coated elements  
➔ EN ISO 14120; 5.6

**Position-bound installation**  
by specified threads in the post profile / avoidance of wrong assembly  
➔ EN ISO 13857; 4.2.2/4.3  
➔ EN ISO 14120; 5.2.6

**Modern design**  
by flush fence, posts are not obscured by fence elements, low total depth of the fence  
➔ EN ISO 14120; 5.3.7/5.23

**Flexible widths**  
Grids can be shortened in the grid by 23 mm in width  
➔ EN ISO 14120; 5.3.7

**Optimal stability**  
Through all-round welded connection of base plate and post profile  
➔ EN ISO 14120; 5.1.3/5.3.8/5.4.2/5.4.3

**No protruding cross-wires**  
this avoids rising edges at the fence elements  
➔ EN ISO 14120; 5.18

**Different ground clearances possible**  
➔ EN ISO 13857; 4.3

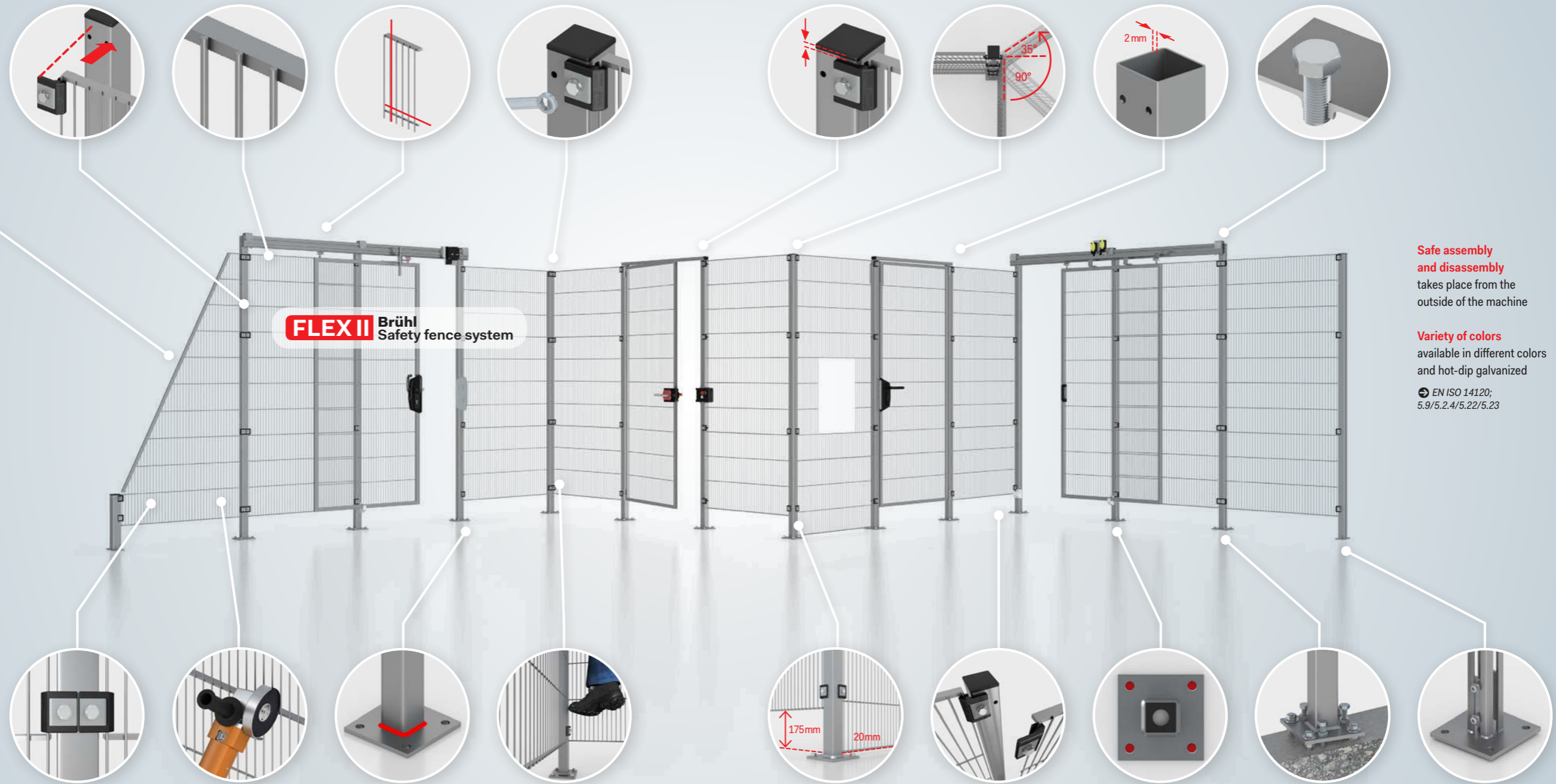
**Single-field disassembly**  
without destabilisation of the adjacent fields  
➔ EN ISO 14120; 5.4.3

**Stable four-hole bottom plate**  
for secure ground attachment  
➔ EN ISO 14120; 5.4.2/5.1.3/5.3.8/5.4.3/5.4.4

**Easy alignment of the adjustment post**  
due to adjustability on slightly uneven ground, optionally available  
➔ EN ISO 14120; 5.2.1

**Safe assembly and disassembly**  
takes place from the outside of the machine

**Variety of colors**  
available in different colors and hot-dip galvanized  
➔ EN ISO 14120; 5.9/5.2.4/5.22/5.23






# Safety fence system Easy FLEX II

Product group / build  
**EA-SF2**

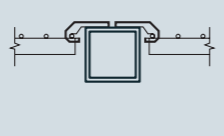


### Posts

			
Fence height	Passage post	Corner post	T-seam post
2000	EA-DP-QR50-F-2000-1313	EA-EP-QR50-F-2000-1313	TP-QR50-F-2000-1313
2200	EA-DP-QR50-F-2200-1313	EA-EP-QR50-F-2200-1313	TP-QR50-F-2200-1313

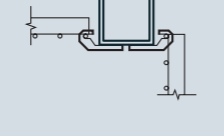
#### Straight fence course

Passage post (DP...)



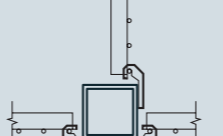
#### Inner corner

Passage post (DP...)



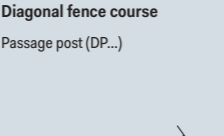
#### T-seam fence course

T-seam post (TP...)



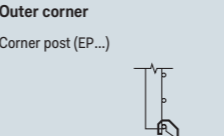
#### Diagonal fence course

Passage post (DP...)



#### Outer corner

Corner post (EP...)



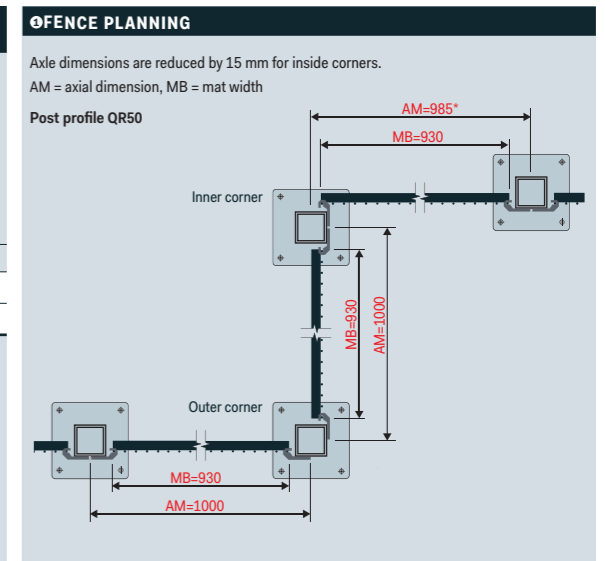
1 When ordering, pay attention to inner corner (DP) and outer corner (EP).  
 2 T-joint connection left or right - both connections available  
 3 Floor fastener BMF included.

### Standard grid elements

Fence height	Product	Mat height	Planned axle size from post centre to post centre 1								Number of post attachment material per mat.
			1000	1200	1400	1500	1600	1800	2000	2200	
2000	EA-SF 2	Ground clearance 175 mm	Real axle size 2								8
			993,5	1200,5	1407,5	1499,5	1614,5	1798,5	2005,5	2212,5	
			Mat width b (axle size - post profile - 20 mm) 2								
2200	EA-SF 2	Ground clearance 175 mm	923,5	1130,5	1337,5	1429,5	1544,5	1728,5	1935,5	2142,5	8
			Number of vertical rods								
			41	50	59	63	68	76	85	94	

**Example of item number code** Product mat height mat width **EA-SF2-1825-1430**

- 1 Mat height equals fence height minus ground clearance.
- 2 Grid spacing 23 x 200 mm, vertical wires Ø 3.5 mm, horizontal flat steel 15 x 6 mm, horizontal wires Ø 5.5 mm
- 3 At different fence heights the wires and the flat bars may deviate in the horizontal.
- 4 With a fence with doors, it can lead to a slight height offset in the horizontal wires and flat bars.
- 5 Flaps FL2-V1 and ground fastener BMF included.
- 6 Maximum tolerances in the field height ± 2.5 mm, maximum tolerances in the field width ± 4.5 mm



# Wing door for handle, latch or deadlock slam lock, opposite sides

**Product group / build**  
**EA-FTW**

① Illustration shows FTW with door set TG-V2.

② Presentation shows FTW with a handle system.

**DOOR ACCESSORIES**

**TG-V2**  
Door set with handle inside and outside

**TG-V5**  
Door set with pusher inside, button outside and penetration protection ②

**SG-F**  
Lock set

**PZ-V4**  
Profile cylinder simultaneous locking ②

**PZ-V5**  
Profile cylinder ② not simultaneous locking

**MOUNTING SYSTEMS FOR SAFETY SWITCHES**

**HP-F**  
Retaining plate system see p. 14

**DOOR ACCESSORIES**

**TZ-GRK-F**  
Handle with ball catch

**TZ-RI-F**  
Latch without safety switch holder

**ATTACHMENT SYSTEM FOR SAFETY SWITCHES**

**GRK-F**  
Handle system see p. 13

**RI-F**  
Handle system see p. 14

**RV-F**  
Handle preparation see p. 16

**GV-F**  
Handle preparation see p. 12

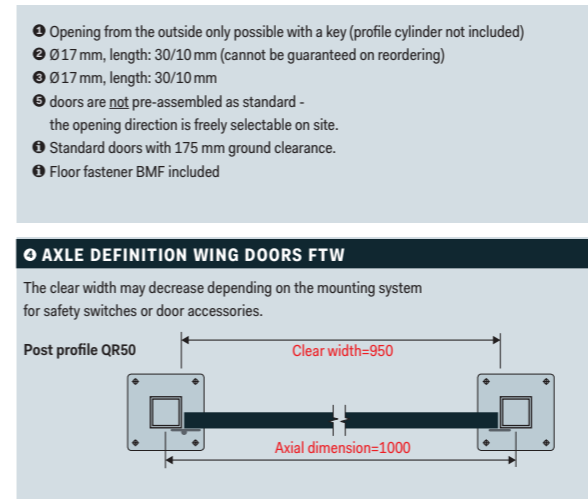
The posts of the bilateral wing door are made of a stable steel profile with welded-on square bottom plate. By default, the two door posts are prepared for a corner and passage situation. The screw-on hinges permit exchange of the stop direction at any time. The FTW build is particularly flexible and compatible with any attachment system for wing doors.

Wing door for handle, latch or deadlock slam lock, opposite sides									
Fence height	Product group / Style	Post profile	Wing profile	Safety fence system / filling FLEX II	Ground clearance	Fence height	Axis ① from center post to the middle of the post		
							800	1000	1200
							Clear width		
							700	900	1100
2000	EA-FTW	-QR50	-QR25	-F	-175	-2000	-800	-1000	-1200
2200	EA-FTW	-QR50	-QR25	-F	-175	-2200	-800	-1000	-1200

**Example of Article Number Key** Product Post Profile Wing Profile Guard Fence System Ground Clearance Fence Height  
Axis dimension **EA-FTW-QR50-QR25-F-175-2000-1000**

FLOOR MOUNTING	
Required number	8 pieces
Attachment type	Fix ancor
Size - Length	M10 · 120/130 mm
Weight example FTW 2000x1000 mm	27,53 kg

DOOR OPENING ③	
MACHINE-SIDE	DIN left / DIN right
OUTSIDE	



# Sliding door for handle or hook lock

Product group / build  
**EA-ST**

Illustration shows ST with door set TG-V2.

Illustration shows ST with a handle system.

**DOOR ACCESSORIES**

**TG-V2**  
Door set with handle inside and outside

**TG-V5**  
Door set with pusher inside, button outside and penetration protection

**SG-F**  
Lock set

**PZ-V4**  
Profile cylinder simultaneous locking

**PZ-V5**  
Profile cylinder not simultaneous locking

**MOUNTING SYSTEMS FOR SAFETY SWITCHES**

**HP-S**  
Retaining plate system see p. 14

**DOOR ACCESSORIES**

**TZ-GR-S**  
Handle

**TZ-GRK-S**  
Handle with ball catch

**MOUNTING SYSTEM FOR SAFETY SWITCHES**

**HP-S**  
Retaining plate system see p. 15

**GV-S**  
Handle preparation see p. 12

The special aluminium profile, long-lived rolls of steel and a guide of polyamid guarantee for a very smooth and precise opening and closing of the door wing. The posts of the sliding door are made of a stable steel profile with welded-on square bottom plate. By default, the two door posts are prepared for a corner and passage situation.

**Sliding door for handle or hook lock**

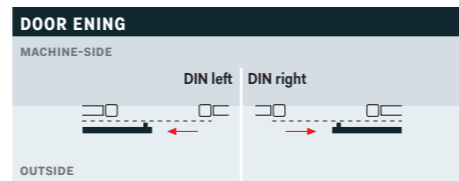
Fence height	Product group / Style	Opening direction		Post profile	Wing profile	Safety fence system / filling FLEX II	Ground clearance	Fence height	Axis ① from center post to the middle of the post	
		left opening	right opening						1000	1200
2000	EA-ST	-L	-R	-QR50	-QR35	-F	-175	-2000	-1000	-1200
2200	EA-ST	-L	-R	-QR50	-QR35	-F	-175	-2200	-1000	-1200

Clear width: 830 / 1030

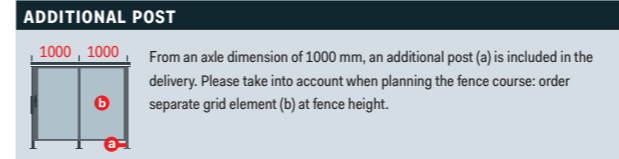
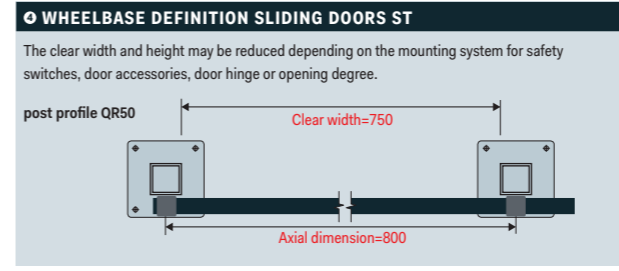
**Example of Article Number Key** Product Opening Direction Post Profile Wing Profile Guard Fence System Ground Clearance Fence Height Axle Dimension **EA-ST-L-QR50-QR35-F-175-2000-1000**

**FLOOR MOUNTING**

Required number	12 pieces
Attachment type	Fixanker
Size · Length	M10 · 120/130 mm
Weight example ST 2000x1000 mm	42,42 kg



- ① Opening from the outside only possible with a key (profile cylinder not included)
- ② Ø17 mm, length: 30/10 mm, same key (cannot be guaranteed when reordering)
- ③ Ø17 mm, length: 30/10 mm
- ④ Standard doors with 175 mm ground clearance.
- ⑤ Lock parts galvanized steel
- ⑥ Floor fastener BMF included.



Good process insight, optimally adapted to the machine design

## Attachment systems for safety switches

### Standard for all Brühl mounting systems

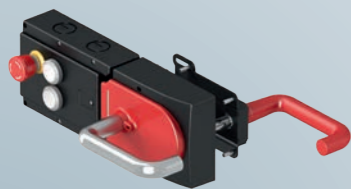
- Robust galvanized surface  
ISO 14120, 5.6
- Symmetrical construction for door stop direction  
DIN left/DIN right
- Rounded laser edge parts  
ISO 14120, 5.3.7
- Precisely fitting thread for switch mounting  
ISO 14119, 5.2/(j)
- Custom-fit provision for safety switches
- All fittings are tamper-proof

## Handle preparation BRÜHL-GV

The grip system BRÜHL-GV is a precisely fitting preparation for attachment of compact and multifunctional safety holding-shut devices for different safety switchgear manufacturers. Depending on the switch build, the product properties include an additional

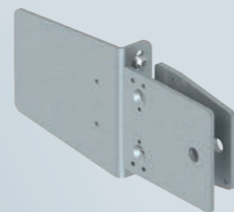
mechanical stop to avoid damage to the door and safety switch, robust zinc-plated surfaces and precisely fitting threads for quick installation.

### This is how it works:



➤ You have already chosen a safety switch:  
e.g. Euchner MGB. Ⓢ

Ⓢ DIN EN ISO 14119



➤ We supply the attachment system to match: Grip preparation BRÜHL-GV with matching provision.



➤ You will receive a precisely fitting attachment system for your safety switch.

### Overview handle preparation BRÜHL-GV for wing doors

Manufacturer	Switch assembly	Item.-No.
Euchner	<b>EUCHNER</b> MGB	GV-F-V2-MGB-B004
Fortress Interlocks	amGardpro EI-I6	GV-F-V4-EI16-B090
	amGardpro EN-T6	GV-F-V4-EN4T6SL-B085
Jokab Safety	Knox	GV-F-V3-KNOX-B069
Schmersal	AZM200	GV-F-V2-AZM200-B003
	AZM200-SZ200	GV-FR-V2-AZM200-SZ200-B035
	AZ200-SZ200	GV-FR-V2-AZ200-SZ200-B035
	AZM200-SZ200	GV-FL-V2-AZM200-SZ200-B036
AZ200-SZ200	GV-FL-V2-AZ200-SZ200-B036	

#### Explanation of attachment situation abbreviation:

FL = wing door DIN left (doors attached on the left), FR = wing door DIN right (doors attached on the right), F = wing door, S = sliding door

- Ⓢ Safety switches are not enclosed.
- Ⓢ Screws for switch attachments are not enclosed.  
See EN ISO 14119, 7.2 c and Table 3.
- Ⓢ Attachment elements can only be released with tools. See EN ISO 14119, 52 (a).
- Ⓢ Observe for fence planning: For grip preparations, the attachment system may protrude in one outer corner; at inner corners, you may need to plan for an additional fence element (e.g. Euchner MGB).
- Ⓢ To prevent reaching over and actuation of the flight unlatching mechanism, we recommend that the door height be at least 1800 mm and a transfer with a diagonal element at low fence heights.

#### PRODUCT OPTION



Protection against reaching through for safety switches with escape release

### Overview handle preparation BRÜHL-GV for sliding doors

Manufacturer	Switch assembly	Item.-No.
Euchner	<b>EUCHNER</b> MGB	GV-S-V2-MGB-B059
Schmersal	<b>SCHMERSAL</b> AZM200	GV-S-V2-AZM200-B060

## Handle system with bullet crossbow BRÜHL-GRK®

The attachment system BRÜHL-GRK® is the standard attachment system for the precisely fitting attachment of safety switches at Brühl wing doors. The safety switch is attached from the outside of the machine at the height of the stable plastic handle. The system is characterised by an optional bullet crossbow that is used according to

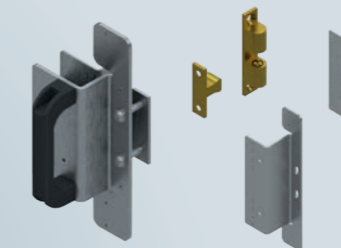
the Brühl product recommendation for safety switches with a latching force below 30 N. The attachment system can be used for doors attached on the right or on the left. The Brühl grip system can be combined with different manufacturer-comprehensive safety switches.

### This is how it works:



➤ You have already chosen a safety switch:  
e.g. Siemens 3SE5. Ⓢ

Ⓢ DIN EN ISO 14119



➤ We supply the attachment system to match: Grip system with bullet crossbow BRÜHL-GRK® with matching provision.



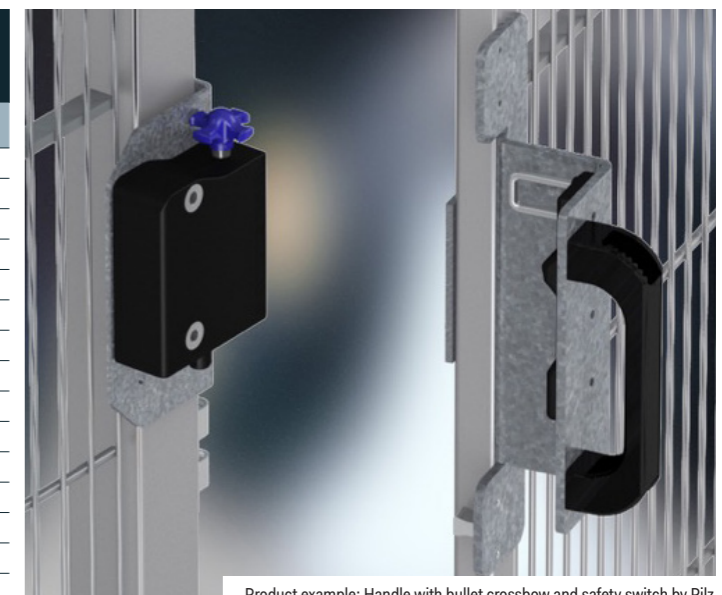
➤ You will receive a precisely fitting attachment system for your safety switch.

### Overview grip system with bullet crossbow BRÜHL-GRK® for wing doors

Manufacturer	Switch assembly	Item.-No.
Bernstein	<b>BERNSTEIN</b> SK	GRK-F-V4-SK-B001
	SKC	GRK-F-V4-SKC-B001
Honeywell	<b>Honeywell</b> GKN	GRK-F-V4-GKN-B001
ABB	Magne	GRK-F-V2-MAGNE-B071
Pilz	<b>PILZ</b> PSENme2	GRK-F-V4-PSENME2-B001
	PSENme3	GRK-F-V4-PSENME3-B001
	PSENslock	GRK-F-V2-PSENSL-B043
Schmersal	<b>SCHMERSAL</b> AZ15	GRK-F-V4-AZ15-B001
	AZ16	GRK-F-V4-AZ16-B001
	AZ300	GRK-F-V2-AZ300-B078
	AZM161	GRK-F-V4-AZM161-B002
	AZM170	GRK-F-V4-AZM170-B055
	AZM300	GRK-F-V2-AZM300-B078
	EX-AZ16	GRK-F-V4-EX-AZ16-B001
	EX-AZM161	GRK-F-V4-EX-AZM161-B002
	MZM100	GRK-F-V2-MZM100-B006
	BNS-B20	GRK-F-V3-BNS-B20-B007
Sick	<b>SICK</b> i16	GRK-F-V4-i16-B001
	i17	GRK-F-V4-i17-B001
Siemens	<b>SIEMENS</b> 3SE2	GRK-F-V4-3SE2-B001
	3SE5	GRK-F-V2-3SE5-B040
Rockwell Automation	440K-T	GRK-F-V4-440K-T-B001

#### Explanation of attachment situation abbreviation: F = wing door, FEO = wing door opening inwards

- Ⓢ Safety switches are not enclosed.
- Ⓢ Screws for switch attachments are not enclosed.  
See EN ISO 14119, 7.2 c and Table 3.
- Ⓢ Attachment elements can only be released with tools. See EN ISO 14119, 52 (a).



Product example: Handle with bullet crossbow and safety switch by Pilz



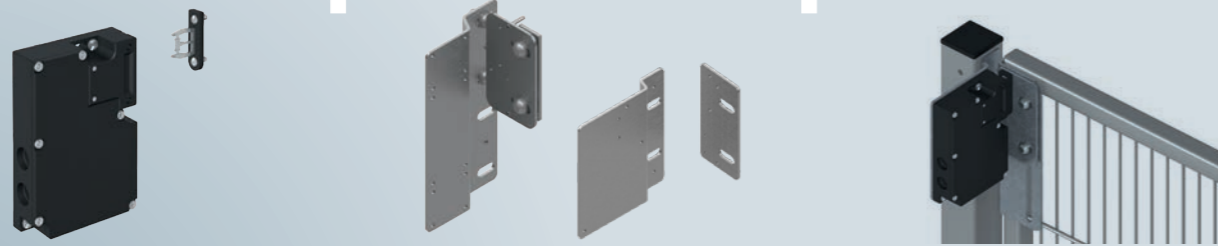
Product example: Handle with bullet crossbow and safety switch by Bernstein

## Retaining plate system BRÜHL-HP-F® for wing doors

The retaining plate system BRÜHL-HP-F® is supplemented according to access comfort with a handle set, a handle or latch. The safety switch is attached with the Brühl retaining plate system in the upper area of the door wing on the machine side. The system can be used for doors attached on the left or right equally. Aluminium plugs serve

manipulation protection. The retaining plate system BRÜHL-HP-F® can be combined easily with safety switches of build 2 (with or without safety holding-shut device).

This is how it works:



➤ You have already chosen a safety switch: e.g. Schmersal AZM161.®

➤ We supply the attachment system to match: Retaining plate system BRÜHL-HP-F® for wing doors with matching provision.

➤ You will receive a precisely fitting attachment system for your safety switch.

➤ DIN EN ISO 14119

### Overview of the retaining plate system BRÜHL-HP-F® for wing doors

Manufacturer	Switch assembly	Item.-No.	Manufacturer	Switch assembly	Item.-No.	
Bernstein	BERNSTEIN	SK	Pilz	PILZ	PSEnme1	
		SKC			PSEnme2	
		SLK			PSEnme3	
Comitronic-BTI	AMX	HP-F-V1-AMX-B067	Rockwell Automation	440K-T	HP-F-V1-440K-T-B052	
Euchner	EUCHNER	CET	Schmersal	SCHMERSAL	AZ15	
		GP			AZ16	
		NZ			AZ17	
		SGP			AZ300	
		STA			AZM161	
		STP			AZM170	
		TP			AZM300	
Honeywell	Honeywell	TZ	BNS16			
		GKN	BZ16			
Leuze electronic	Leuze electronic	GKS	EX-AZ16			
		L200	EX-AZM161			
Omron Electronics	OMRON	S20	XCS-A			
		D4NL	XCS-B			
Omron Electronics	OMRON	D4NS	XCS-C			
		Telemecanique Sensors	Telemecanique Sensors	SICK	XCS-E	
					i10	XCS-PA
					i12	XCS-TA
					i16	XCS-TE
					i17	i10
					3SE2	i12
					3SE5	i16
					3SE5	i17
					3SE5	T400-DNA
3SE5	3SE2					
3SE5	3SE5					
3SE5	3SE5					



Product example: Retaining plate with safety switch from Pilz

Explanation of attachment situation abbreviation: F = hinged door, FEO = wing door opening inwards

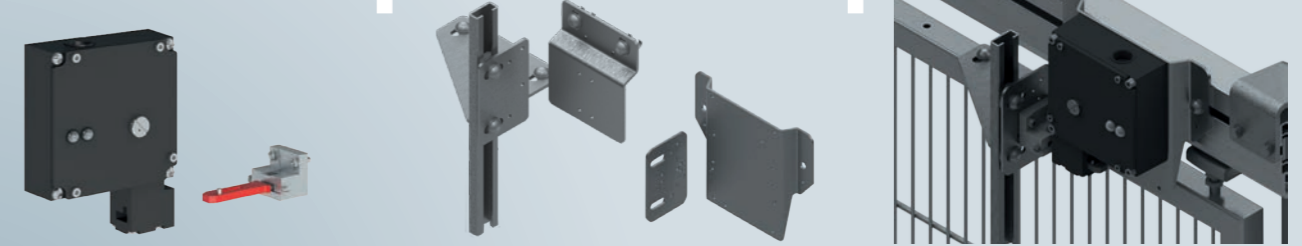
- Safety switches are not enclosed.
- Screws for switch attachments are not enclosed. See EN ISO 14119, 7.2 c and Table 3.
- Attachment elements can only be released with tools. See EN ISO 14119, 52 (a).

## Mounting plate system BRÜHL-HP-S® for sliding doors

The BRÜHL-HP-S® mounting plate system is complemented by a handle set or a handle in accordance with accessibility and can be used for both left and right-hinged doors. A mechanical stop in the aluminum profile prevents damage to the safety switch and actuator. The position of the safety switch depends on the door type and the

wing mobility. The brackets BRÜHL-HP-S® can be easily combined with safety switches of type 2 (with or without safety lock).

This is how it works:



➤ You have already chosen a safety switch: e.g. Euchner TZ.®

➤ We supply the attachment system to match: Retaining plate system BRÜHL-HP-S® for sliding doors with matching provision.

➤ You will receive a precisely fitting attachment system for your safety switch.

➤ DIN EN ISO 14119

### Overview of the retaining plate system BRÜHL-HP-S® for sliding doors

Manufacturer	Switch assembly	Item.-No.	Manufacturer	Switch assembly	Item.-No.
Bernstein	BERNSTEIN	SK	Schmersal	SCHMERSAL	AZ15
		SKC			AZ16
		SLK+ENK			AZ17
		SLK			AZM161
Comitronic-BTI	AMX	HP-S-V6-AMX-B070	Telemecanique Sensors	Telemecanique Sensors	AZM170
Euchner	EUCHNER	NZ			BNS16
		STA			BZ16
		STP			AZM400
		TP			XCS-A
		TZ			XCS-B
		CET	XCS-C		
Honeywell	Honeywell	CES	XCS-E		
		GKN	XCS-PA		
Jokab Safety	EDEN	HP-S-V3-GKN-B053	Sick	SICK	XCS-PA
Leuze electronic	Leuze electronic	GKS			XCS-TA
		L200			XCS-TE
S20	i10				
Omron Electronics	OMRON	D4NS	i12		
		Pilz	PILZ	PSEnme1	i16
PSEnme2	i17				
PSEnme3	3SE2				
PSEnsllook	3SE5				
PSEnncs3	3SE5				
PSEnncs4	3SE5				
PSEnma1	3SE5				
PSEnma2	3SE5				
440G-T	3SE5				
440K	3SE5				

Explanation of attachment situation abbreviation: S = sliding door

- Safety switches are not enclosed.
- Screws for switch attachments are not enclosed. See EN ISO 14119, 7.2 c and Table 3.
- Attachment elements can only be released with tools. See EN ISO 14119, 52 (a).



Product example: Retaining plate with safety switch by Euchner



## Latch preparation BRÜHL-RV for wing doors

This system is a preparation for safety switches that is made of a combination of safety switch, attachment plates/elements and latches of many different safety switchgear manufacturers. The BRÜHL-RV system is used to install the safety switch precisely to ensure long-lived

latching function. A high assembly effort is avoided by using standard hole patterns at Brühl wing doors.

This is how it works:



➤ You have already chosen a safety switch: e.g. Fortress Interlocks AMS1STOP.®



➤ We supply the attachment system to match: Latch preparation BRÜHL-RV for wing doors with matching provision.



➤ You will receive a precisely fitting attachment system for your safety switch.

➤ DIN EN ISO 14119

### Overview latch preparation BRÜHL-RV for wing doors

Manufacturer	Switch assembly	Item.-No.
Dold	<b>DOLD</b>	STS RV-F-V4-STS3-B063
Euchner	<b>EUCHNER</b>	CTP RV-F-V3-CTP-B020
		GP RV-F-V3-GP-B020
		NZ RV-F-V3-NZ-B020
		SGP RV-F-V3-SGP-B020
		STA RV-F-V3-STA-B020
		STP RV-F-V3-STP-B020
		TP RV-F-V3-TP-B020
		TX RV-F-V3-TX-B020
		TZ RV-F-V3-TZ-B020
Fortress Interlocks	<b>Fortress Interlocks</b>	AMA1STOP RV-F-V2-AMA1STOP-B019
		AMS1STOP RV-F-V2-AMS1STOP-B019
		DM1 RV-F-V4-DM1-B033
		DM2 RV-F-V4-DM2-B033
Pilz	<b>PILZ</b>	PSENcs1 RV-F-V3-PSENCs-B032
		PSENcs2 RV-F-V3-PSENCs-B032
		PSENme1 RV-F-V3-PSENME1-B032
		PSENsgate RV-F-V6-PSENSG-B064
Telemecanique Sensors	<b>Telemecanique Sensors</b>	XCS-A RV-F-V2-XCS-A-B066
		XCS-B RV-F-V2-XCS-B-B066
		XCS-C RV-F-V2-XCS-C-B066
		XCS-E RV-F-V2-XCS-E-B066



Product example: Latch preparation with safety switch from Dold

Explanation of attachment situation abbreviation: F = wing door

- Safety switches are not enclosed.
- Screws for switch attachments are not enclosed. See EN ISO 14119, 7.2c and Table 3.
- Fasteners can only be released with tools. See EN ISO 14119, 52 (a)
- To prevent reaching over and actuation of the flight unlatching mechanism, we recommend that the door height be at least 1800 mm and a transfer with a diagonal element at low fence heights.

## Latch preparation BRÜHL-RI® for wing doors

By the locking bolt, the actuator is mechanically guided when retracting into the safety switch. The latch system BRÜHL-RI® has a built-in random safety device, by a compression spring, the bolt tongue is held without an operation in the position „bolt closed“. Aluminum plugs serve as manipulation protection. This system is very robust,

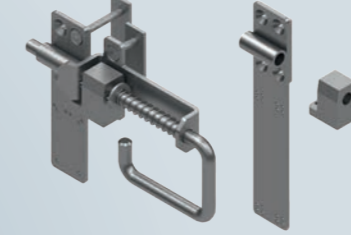
needs low maintenance and is easy to clean and has proven itself in the industrial environment for more than 30 years. The BRÜHL-RI® mounting system can be easily combined with safety switches of type 2 (with or without safety lock).

This is how it works:



➤ You have already chosen a safety switch: e.g. Euchner TP.®

➤ DIN EN ISO 14119



➤ We supply the attachment system to match: Latch system BRÜHL-RI® for wing doors with matching provision.



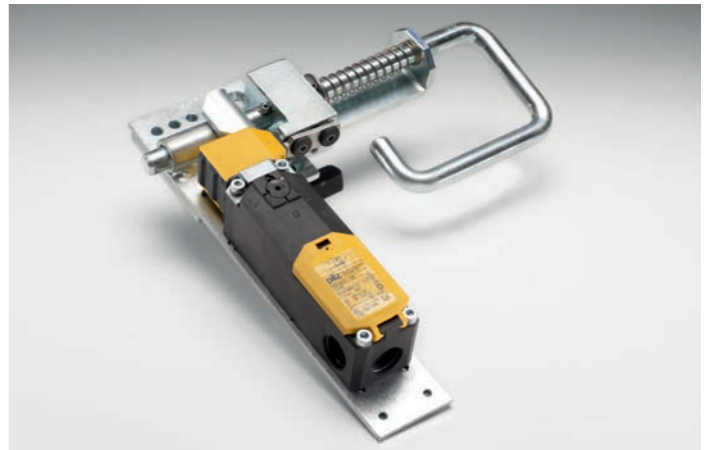
➤ You will receive a precisely fitting attachment system for your safety switch.

### Overview latch system BRÜHL-RI® for wing doors

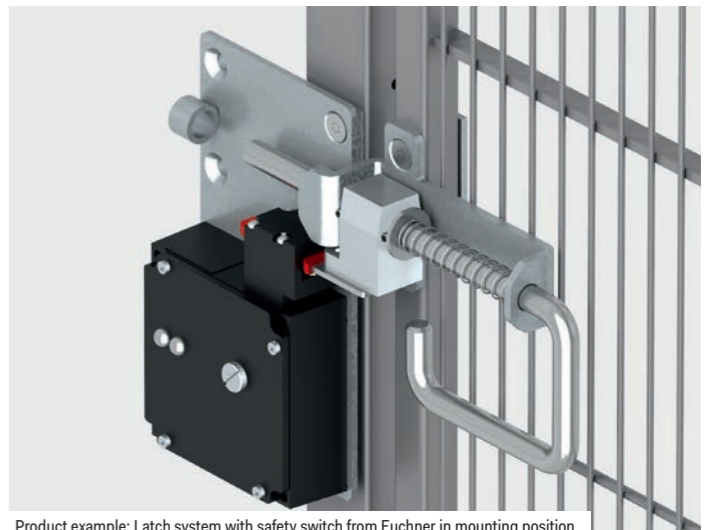
Manufacturer	Switch assembly	Item.-No.
Bernstein	<b>BERNSTEIN</b>	SLK RI-F-V1-SLK-B016
		SK RI-F-V5-SK-B021
		SKC RI-F-V5-SKC-B021
Euchner	<b>EUCHNER</b>	CTP RI-F-V1-CTP-B017
		NZ RI-F-V1-NZ-B054
		STA RI-F-V1-STA-B017
		STP RI-F-V1-STP-B017
		TP RI-F-V1-TP-B017
		TZ RI-F-V1-TZ-B018
Honeywell	<b>Honeywell</b>	GKS RI-F-V1-GKS-B017
		GKN RI-F-V5-GKN-B021
Leuze electronic	<b>Leuze electronic</b>	L200 RI-F-V1-L200-B017
Pilz	<b>PILZ</b>	PSENme1 RI-F-V1-PSENME1-B016
		PSENme2 RI-F-V5-PSENME2-B021
		PSENme3 RI-F-V5-PSENME3-B021
Rockwell Automation		440K-C RI-F-V1-440K-C-B054
		440K-C RI-F-V5-440K-C-B021
		440K-T RI-F-V5-440K-T-B021
Schmersal	<b>SCHMERSAL</b>	AZ15 RI-F-V5-AZ15-B021
		AZ16 RI-F-V5-AZ16-B021
		AZM161 RI-F-V5-AZM161-B022
		AZM190 RI-F-V5-AZM190-B057
		BNS16 RI-F-V5-BNS16-B021
		TZK RI-F-V5-TZK-B057
Telemecanique Sensors	<b>Telemecanique Sensors</b>	XCS-E RI-F-V1-XCS-E-B018
Sick	<b>SICK</b>	i10 RI-F-V1-i10-B017
		i16 RI-F-V5-i16-B021
		i17 RI-F-V5-i17-B021
Siemens	<b>SIEMENS</b>	3SE5 RI-F-V1-3SE5-B015
		3SE2 RI-F-V5-3SE2-B021

Explanation of attachment situation abbreviation: F = wing door

- Safety switches are not enclosed.
- Screws for switch attachments are not enclosed. See EN ISO 14119, 7.2c and Table 3.
- Fasteners can only be released with tools. See EN ISO 14119, 52 (a)



Product example: Latch system with safety switch from Pilz



Product example: Latch system with safety switch from Euchner in mounting position

# Accessories

## Post fastening material

**FLEX II-tab with captive hexagon screw**  
Plastic brackets with angle profile and fasteners.

**FL2-V1**

PATENT PROTECTION

STANDARD

**FLEX II-tab with captive Torx screw**  
Plastic brackets with angle profile and fasteners.

**FL2-V2**

PATENT PROTECTION

**FLEX II-tab with captive hexagon screw and spacer plate**  
Plastic brackets with angle profile and fasteners.

**FL2DP-V1**

PATENT PROTECTION

**Flexangle with attachment**  
Angle bracket with fasteners

**FL1W-V1**

**FLEX I-tab with captive hexagon screw**  
Bracket with fasteners

**FL1-V2**

Angle position can be adjusted by bending inwards: up to 90 degrees; to the outside: up to 45 degrees

**FLEX I-tab with captive hexagon screw and canting for corner connection**  
Bracket with fasteners

**FL1-V3**

Angle position can be adjusted by bending outwards: up to 45 degrees

Product description	VPE (piece)	Item.-No.
FLEX II tab with captive hexagon screw	6	FL2-V1-6
	8	FL2-V1-8
	10	FL2-V1-10
	50	FL2-V1-50
FLEX II tab with captive Torx screw	10	FL2-V2-10
FLEX II-tab with captive hexagon screw and spacer plate	5	FL2DP-V1-5
Flex angle with attachment	5	FL1W-V1-5
FLEX I-tab with captive hexagon screw	8	FL1-V2-8
FLEX I-tab with captive hexagon screw and canting for corner connection	5	FL1-V3-5

## Ground engaging means

**Fix anchor**  
galvanized steel

**BMF**

Product description	Thread	Length (mm)	VPE (piece)	Art. No.
Fix anchor galvanized steel	M10	120	10	BMF-10x120-10

# Colours and surfaces

**Standard colours**

<b>RAL 1021</b> RAPESEED YELLOW	<b>RAL 2004</b> PURE ORANGE	<b>RAL 5012</b> LIGHT BLUE	<b>RAL 7035</b> LIGHT GREY	<b>RAL 9005</b> DEEP BLACK	HOT ZINC DIPPED
------------------------------------	--------------------------------	-------------------------------	-------------------------------	-------------------------------	-----------------

**Paint system**

**Steel wire and powder surface**  
Color specification: powder coated PE/EP: DIN EN ISO 12944-C2M

Indoor use: DIN EN ISO 12944 – blasting SA 2 1/2 and powder PE/EP correspond to corrosion protection class C2M.



# Impressum

**Brühl Safety GmbH**  
Managing directors:  
Heinrich Brühl  
Kai Wienecke

Waldstraße 63b  
57250 Netphen, Germany

Phone: +49 (0) 2737 59 34 0  
Telefax: +49 (0) 2737 59 19 46

info@bruehl-safety.com  
www.bruehl-safety.com

© Copyright by Brühl Safety GmbH

All pictures, figures and illustrations are copyright-protected. The catalogue information must only be reproduced by potential customers and customers for their internal information purposes. Any further use shall require the written consent of Brühl Safety GmbH.

Technical changes and errors reserved (2018).

All information is provided without liability. Liability claims of any kind are generally excluded.

Brühl assumes no liability for the information provided being accurate, up to date, complete or of good quality. Damages claims against Brühl or its employees based on the provided information shall be excluded, except in case of gross negligence or intent. The information or examples provided in this catalogue shall not release the constructors from the risk assessment or analysis due to them or from viewing the original standards.

